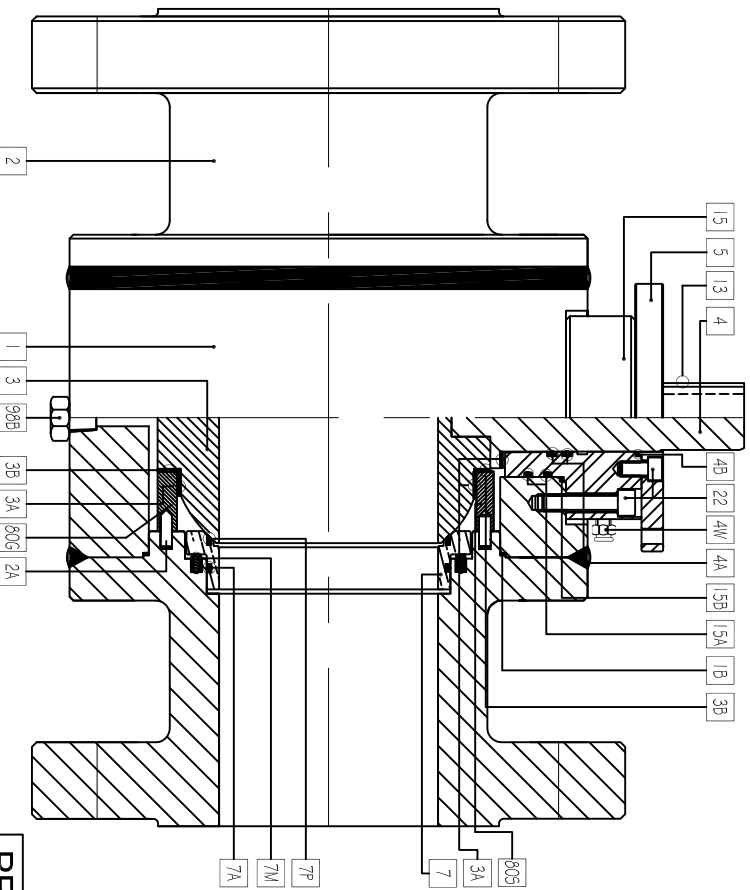
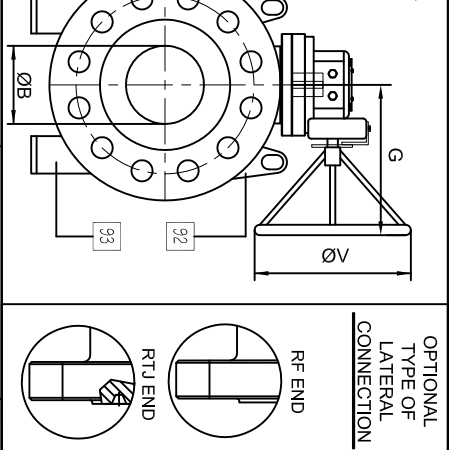
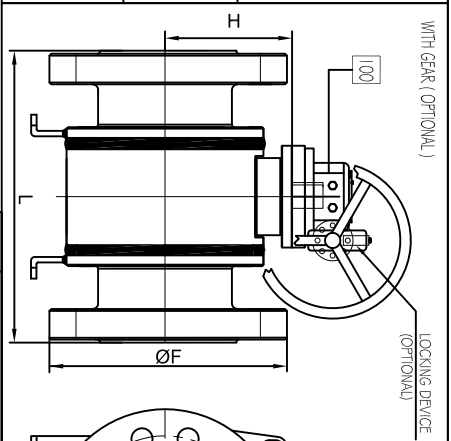
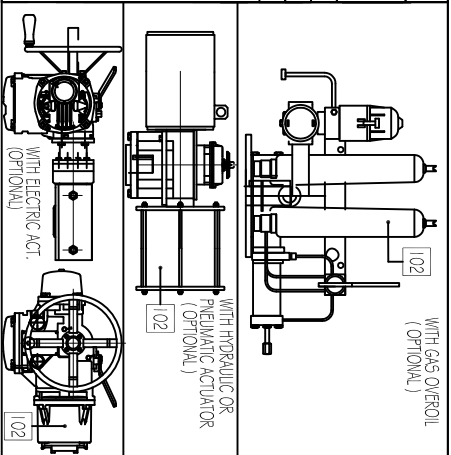


DIMENSIONS TABLE		ØB	ØF	H	ØV	G	Kg.*
NPS	CLASS						
	RF						
	150	686	927	656	-	-	4635
	300	978	1238	950	-	-	13970
48"	300	2170	1140	1467	1200	-	24300

NOTE: \*) WEIGHTS ARE SUBJECT TO CHANGE WITHOUT NOTICE



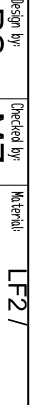
**PRELIMINARY DRAWING**

GENERAL NOTES:  
 -DESIGN/CONSTR. ACCORDING TO ANSI B 16.34 / API 6D LATEST EDIT.  
 -DIMENSIONS ARE IN mm  
 -END TO END DIMENSION AS ANSI B 16.10 / API 6D LONG PATTERN  
 -FLANGED MEASUREMENTS AS ANSI B 16.5 (size ≤ 24")  
 -FLANGED MEASUREMENTS AS ANSI B 16.47A (size ≥ 26")  
 -STEM WITH ANTISTATIC DEVICE BS 5351  
 -FIRE SAFE TEST ACCORDING TO BS 6755 Part. 2 / API 6FA  
 -PRESSURE TEST ACCORDING TO BS 6755 Part. 1 / API 6D

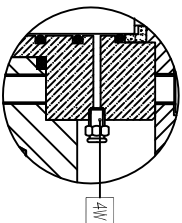
Customer: **ENERGIMASH**  
 Ref.: **RF082867-08 VIAR**  
 TAG Nr.:  
 Data sheet:

Design type: **ASSEMBLY DWG - BILL OF MATERIAL**  
 Valve type: **TRUNNION WELDED BALL VALVE**  
 Design type: **FULL BORE**  
 Drawing No.: **G.A.PL 28-40-48 RF ACT.**  
 Rev: **0**

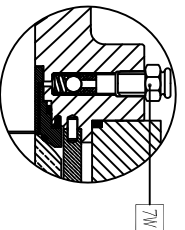
Design by: **RS** Checked by: **MZ** Material: **LF2/**  
 (LF2/4140) E.N.P.



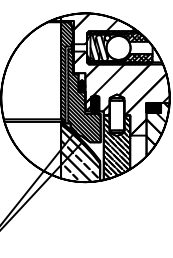
LUBRICATED STEM DETAIL



LUBRICATED SEAT DETAIL



METAL SEAT DETAIL



TUNGSTEN CARBIDE COATING ON BALL AND METAL SEAT

Nº	PART NAME	MATERIALS	Note
1	BODY	ASTM A 350 LF2	
1B	BODY GASKET	PURE GRAPHITE	
2	LATERAL CONNECTION	ASTM A 350 LF2	
2A	CENTERING PIN	HIGH RESIST CARBON STEEL	
3	SOLID BALL	ASTM A 350 LF2	1,5
3A	PUSH BEARING	DU DRY	
3B	TRUST BEARING	ASIS 4140	
4	STEM	VITON GLT	1
4A	FIRST & SECOND STEM SEAL	PURE GRAPHITE	
4B	STEM PACKING	CARBON STEEL	
4W	STEM SEALANT INJECTOR	CARBON STEEL	
5	ISO FLANGE	ASTM A 350 LF2	
7	METAL SEAT	ASTM A 350 LF2	1,5
7A	FIRST & SECOND SEAT SEAL	VITON GLT	
7M	SEAT SPRING	INCONEL X 750	
7P	SOFT SEAT INSERT	VITON GLT	6
7W	SEAT SEALANT INJECTOR	CARBON STEEL	8
13	STEM KEY	CARBON STEEL	
15	STEM HOUSING SEAL	ASTM A 350 LF2	1
13A	STEM HOUSING SEAL	VITON GLT	
15B	STEM HOUSING PACKING	PURE GRAPHITE	
22	SOCKET BOLT	DIN 8.8	
80G	LOWER BALL TRUNNION SHEEL	ASTM A 350 LF2	
80S	UPPER BALL TRUNNION SHEEL	ASTM A 350 LF2	
92	LIFTING DEVICE	CARBON STEEL	
93	VALVE FEET	CARBON STEEL	
98A	VENT BLEEDER (NOT SHOWN)	CARBON STEEL	
98B	DRAIN PLUG	CARBON STEEL	
100	GEAR (OPTIONAL) - 102 ACTUATOR-GAS-OVERROLL (OPTIONAL) STD.MFR		

NOTE:  
 1) E.N.P. 0.001 INCHES THK

- 5) TUNGSTEN CARBIDE COATING IN CASE OF METAL TO METAL
- 6) N/A IN CASE OF METAL TO METAL
- 8) TWO SEALANT INJECTORS ON METAL SEAT FROM 14" AND ABOVE